



---

**VLM3 Value Line**

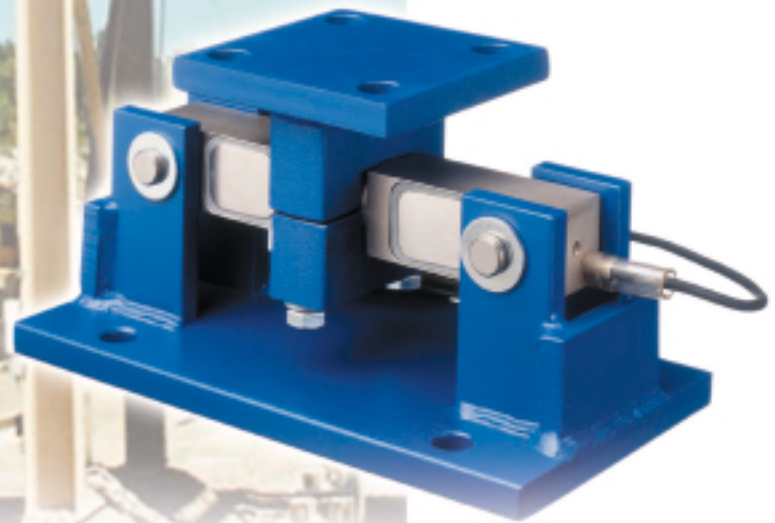
---

Load Cell

---

Weigh Module

---



**For General Purpose Weighing Of  
Tanks, Hoppers, OEM Machinery**

**METTLER TOLEDO**





# Dual Ended Beam Load Cell with Fixed Yoke Suspension

## Capacities

|          |          |
|----------|----------|
| 1000 lb  | 25000 lb |
| 2000 lb  | 35000 lb |
| 5000 lb  | 50000 lb |
| 10000 lb | 75000 lb |
| 15000 lb |          |

- Rugged self-checking design
- Mounting hardware allows for thermal expansion and contraction
- NEMA 4X stainless steel analog summing box with trim pots standard
- Factory Mutual Entity Approval

The VLM3 Value Line weigh modules offer good value for general purpose tank, hopper, and OEM weighing applications.

The VLM3 weigh modules incorporate a proven dual ended beam load cell and are available in 1,000 lb through 75,000 lb capacities. The rugged self-checking module design allows for thermal expansion and contraction of vessels due to sunlight exposure or internal vessel reactions.

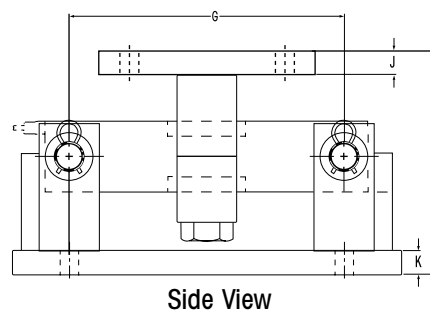
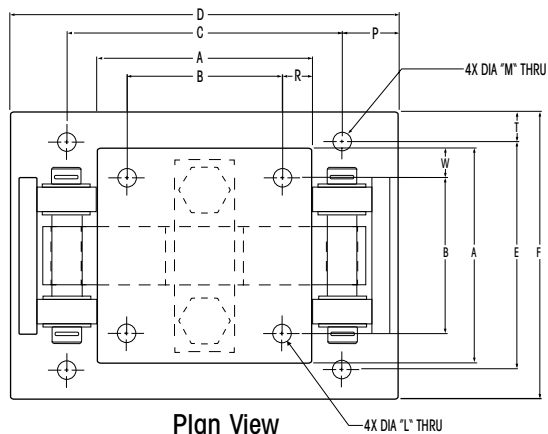
### Hazardous Area Approval

VLM3 load cells have Factory Mutual Entity Approval for use in hazardous areas.

### ISO 9000

This product was produced in a METTLER TOLEDO facility that has been audited and registered according to international (ISO 9001) quality standards.

For questions on VLM3 weigh modules and technical matters, call your nearby METTLER TOLEDO office or authorized distributor. Or visit our website: [www.mt.com](http://www.mt.com) to find the location of the nearest METTLER TOLEDO sales representative or distributor.



|        | A    | B    | C     | D     | E    | F     | G     | H    | J    | K    | L    | M    | P    | R    | T    | W    |
|--------|------|------|-------|-------|------|-------|-------|------|------|------|------|------|------|------|------|------|
| 1-5K   | 4.00 | 2.75 | 6.25  | 9.25  | 3.75 | 5.00  | 6.25  | 5.13 | 0.50 | 0.50 | 0.56 | 0.56 | 1.50 | 0.62 | 0.62 | 0.62 |
| 10-35K | 8.00 | 6.00 | 7.50  | 12.00 | 6.00 | 8.00  | 7.50  | 7.9  | 0.75 | 0.75 | 0.81 | 0.81 | 2.25 | 1.00 | 1.00 | 1.00 |
| 50-75K | 9.00 | 6.50 | 11.50 | 16.25 | 9.50 | 12.00 | 11.50 | 9.30 | 1.00 | 1.00 | 0.81 | 0.81 | 2.38 | 1.25 | 1.25 | 1.25 |

## Dimensions



Produced in a facility that is



|   | TEL                                 | FAX                | TEL                                 | FAX                 | Internet   |
|---|-------------------------------------|--------------------|-------------------------------------|---------------------|--|
| <b>METTLER TOLEDO</b>   | Australia (61-3) 9644 5700          | (61-3) 9645 3935   | Kazakhstan (7-3272) 50 63 69        | (7-3272) 60 88 35   | <a href="http://www.mt.com">www.mt.com</a>       |
| <b>USA and Canada</b><br>1900 Polaris Parkway<br>Columbus, Ohio 43240 | Austria (43-1) 604 1980             | (43-1) 604 2880    | Korea (82-2) 518-2004               | (82-2) 518-0813     | Specifications subject to change without notice. |
| TEL. (800) 786-0038<br>(614) 438-4511                                 | Belgium (32-2) 334 0211             | (32-2) 378 1665    | Malaysia (603) 7041773              | (603) 7031772       | © 2001 Mettler-Toledo, Inc.                      |
| FAX (614) 438-4900  | Brazil (55-11) 421 5737             | (55-11) 7295-1692  | Mexico (52-5) 547 5700              | (52-5) 541 2228     | Printed in USA.                                  |
| <b>Headquarters</b><br>8606 Greifensee<br>Switzerland                 | China (Industrial) (86-519) 6642040 | (86-519) 6641991   | Netherlands (31-344) 638363         | (31-344) 638390     | 5M0302<br>Tank Hopper<br>I01TH03361.OE           |
| TEL. (41-1) 944 22 11<br>FAX (41-1) 944 30 60                         | China (Systems) (86-21) 6485-0435   | (86-21) 6485-3351  | Norway (47-22) 30 44 90             | (47-22) 32 70 02    |  |
|   | Croatia (385-1) 23 36 317           | (385-1) 23 04 147* | Poland (48-22) 651 9232             | (48-22) 651-7172    |  |
|   | Czech Republic (420-2) 254962       | (420-2) 24247583   | Russia (7-095) 921 9211             | (7-095) 921 6353    |  |
|   | Denmark (45-43) 27 08 00            | (45-43) 27 08 28   | Singapore (65) 8900011              | (65) 8900012        |  |
|   | France (33-1) 30 97 17 17           | (33-1) 30 97 16 16 | Slovak Republic (421-7) 43 42 74 96 | (421-7) 43 33 71 90 |  |
|   | Germany (49-641) 50 70              | (49-641) 52951     | Slovenia (386-61) 162 1801          | (386-61) 162 1789*  |  |
|   | Hong Kong (852) 27441221            | (852) 27446878     | Spain (34-93) 223 2222              | (34-93) 223 0271    |  |
|   | Hungary (36-1) 257 9889             | (36-1) 256 2175    | Sweden (46-8) 702 50 00             | (46-8) 642 45 62    |  |
|   | India (91-22) 857-0808              | (91-22) 857-5071   | Switzerland (41-1) 944 45 45        | (41-1) 944 45 10    |  |
|   | Italy (39-02) 333321                | (39-02) 356-2973   | Taiwan (886-2) 2579-5955            | (886-2) 2579-5977   |  |
|   | Japan (81-6) 6949-5901              | (81-6) 6949-5944   | Thailand (66-2) 719 6480            | (66-2) 719 6479     |  |
|   |                                     |                    | United Kingdom (44-116) 235 7070    | (44-116) 236 6399   |  |

\*Call for fax.